

[View as Webpage](#)

E-Newsletter of the National Postal Museum | February 2024



Upcoming Public Programs

“Exploring the Black Heritage Stamp Series”

Tuesday, February 20, 6 – 7:00 p.m. ET | On Zoom



Join the National Postal Museum for a virtual evening lecture exploring the USPS Black Heritage stamp series. Chief Curator of Philately Daniel Piazza will provide insight into the series—the longest-running US postage stamp series—and how it has changed since its start in 1978.

[>> Learn more and register](#)

“Building Community with Murals”

Monday, February 26, 4 – 5:00 PM ET | On Zoom

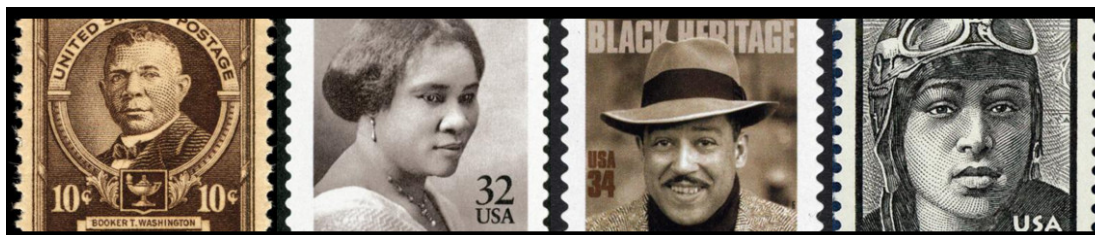


Murals are one of the oldest visual art forms known to humans and have been used to spread social and political messages, reflect cultural identity, and revitalize neighborhoods. In this session, renowned artist and muralist Rafael López joins National Postal Museum educator Maureen Leary to explore how educators in all types of learning environments can leverage mural-making to encourage self-expression and build community. You'll leave with resources and strategies to explore murals as an art form and initiate your own mural projects with learners of all ages.

[>> Learn more and register](#)

Celebrating Black History Month

African Americans in the Postal Service and Philately



The National Postal Museum celebrates African American history by providing online resources about the role of African Americans in the postal service and philately.

[>> Learn more](#)

Object Spotlights



Snowbird

Not long after automobiles and horsepower began to replace horses, the desire for a way to use automobiles year round followed. The snow across which horses could jauntily pull a sleigh was often too much of a challenge for automobiles. Foremost among those who needed to find a way to use their cars and trucks all year long were America's rural letter carriers. After all, even if "neither snow nor rain or heat nor gloom of night" has never been an official postal motto, it certainly reflects the expectation that letter carriers and the mail will make the trip to our mailboxes, regardless of the weather.

[>> Continue](#)

Segregated Saddlebag

Among the millions of items in the museum's collection is one that is a harsh reminder of a troubling piece of American history. This saddlebag was used by a rural letter carrier at the turn of the last century in Virginia. While the outside of the saddlebag is innocuous enough, flipping open the mailbags on each side reveal a disturbing reality. One of the bags is marked by one hand, "White," the other "Colored."

The saddlebag was used by a rural carrier operating out of the Palmyra post office in Fluvanna County, Virginia, most probably by Frank W. Shepherd (1868-1931). Shepherd and James E. Howard were hired as Rural Free Delivery carriers by Palmyra postmaster, George E. Bethel.

[>> Continue](#)

Plan your next visit

The National Postal Museum is open 7 days a week, from 10:00 a.m. – 5:30 p.m. (Closed December 25)

[>> Learn more about visiting the National Postal Museum](#)

[>> View our calendar of events](#)



Join the conversation! Visit us on social media!



Support the National Postal Museum



While Federal support is essential to the basic operations of the National Postal Museum, only private funds can provide the dependable, creative and flexible support needed for the Museum to thrive.

Your support enables us to build compelling exhibitions, create engaging educational and public programs, achieve the highest standards in conservation, conduct research activities, and maintain a tradition of excellence.

Help today with a tax-deductible gift to the National Postal Museum.

Support the National Postal Museum

Smithsonian National Postal Museum | 2 Massachusetts Avenue NE, MRC 570 PO Box 37012,

